

LINEEYE

MULTI PROTOCOL ANALYZER

PC Link Software

LE-PC300R

Instruction Manual

Input the serial number on installation of this product.

You can see the serial number written on the package box and
Registration Card.

The actual display or manner of operation may differ from that of the
instruction manual because of the improvement of the product and so
on. Please refer to the online help also for the use of the software.

<Ver. 2>

Contents

Chapter 1	Before Using the Product	1
Chapter 2	Introduction	2
	General Description	2
	Unpacking	2
Chapter 3	Before Start-up	2
	Installation Guide	2
	Uninstallation Guide	2
	USB Driver Installation	3
	Analyzer Setting	4
Chapter 4	Data Window	6
	Data Window of PC link software LE-PC300R	6
Chapter 5	Environment Setting	7
	Remote Setting	7
Chapter 6	Remote Monitor	15
	Connection	15
	Analyzer Setting	15
	Simulation Data Setting	16
	Max speed when remote monitoring	17
	Start Measurement	17
	Stop Measurement	17
	Remote Monitor Screen	18
	Read the Measurement Data	19
	Search Data	19
Chapter 7	Bit Error Rate Test (BERT)	20
	Start Measurement	20
Chapter 8	Key Emulation	21
	Run Key Emulation	21
	Capture the Screen Image	21
Chapter 9	Text Conversion	22
	Text Conversion Function Setting	22
	Start Text Conversion	24
Chapter 10	Waveform Monitor Data	25
Chapter 11	Connecting Multiple Analyzers	26
	Add the Remote Setting	26
	Open the Data Window	27
	Delete the Remote Setting	27
	Operate Setting When Starting	27
	Startup Options	28
Chapter 12	Specification	29

Chapter 1 Before Using the Product

Software License Agreement

LINEEYE CO., LTD (LINEEYE) grants you to use the software program and the documents under the terms of this license. And you are consenting to be bound by and are becoming a party to this agreement.

To use the software, you need to agree to this license agreement.

1. Copyright

LINEEYE holds the copyright on this software.

2. Grant of License

LINEEYE grants for you to use this software on only one computer by agreeing this license agreement. Therefore, you shall not rent, lease and loan to a third party.

3. Copy, Analysis, Modification

This software must not be reproduced, analyzed or modified in any form unless prescribed in the manual.

4. Upgrade

This software may be upgraded without any advance notice because of technical progress of hardware or software. LINEEYE provides the upgraded software with the upgrade fee. For upgrade, only licensed user can have upgrades.

5. Limitation of Liability

In no event shall LINEEYE or its licensors be liable for any loss of business or profits, or for any direct, indirect, incidental or consequential damages arising from products of this software or the related software. Besides LINEEYE shall not be liable damages arising from the equipment.

6. General

If any provision of the agreement is held invalid, such provision shall be removed from this license agreement.

7. Support

LINEEYE supports functions, operation and only the problem on this software.

8. Notice

Any matter not specified in this agreement will be governed by and constructed in accordance with copy right law and related laws.

LINEEYE CO., LTD.

Chapter 2 Introduction

Thank you for your purchase of LINEEYE's PC link software.

- To use it correctly, you are advised to read and understand this together with the instruction manual for analyzer thoroughly.
- Keep this instruction manual.

General Description

This software allows the analyzers (LE-2500R/LE-3500R/LE-1500/LE-2500/LE-3500) to measure through PC, and to store the monitored data in the PC via USB, AUX port (serial), Wi-Fi (LE-2500R/LE-3500R), or memory card.

Unpacking

When you unpack the product, make sure of the following:

(The light edition is included in the CD-ROM attached to the analyzer.)

- | | |
|---|---|
| <input type="checkbox"/> CD-ROM (software) | 1 |
| <input type="checkbox"/> Instruction Manual (This book) | 1 |
| <input type="checkbox"/> Customer Registration Card | 1 |

Please contact your LINEEYE distributors if you find any damage to the product caused by transportation, or if there are accessories lacking. Please be sure to register the product via our website. Without the registration, you may not be able to get support such as version-up.

Chapter 3 Before Start-up

Installation Guide


1. Insert the CD-ROM into the CD-ROM drive.
2. Run "setup.exe" in the CD-ROM
3. The setup program will start. Follow the setup instructions. The program asks you to enter the serial number when installing. When you install the light edition, enter "LITE". When you install the product version, you can find the serial number on the side of the box that contains the software (or on the registration card included in the package).
4. After the installation is completed, click "Finish".

Uninstallation Guide

1. Click "programs and features" from the control panel. (It may differs depending on the OS.)
2. Select "LE-PC300R" from the list, then uninstall it.

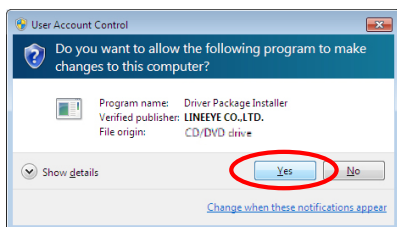
USB Driver Installation

This PC link software can control the analyzer (LE-3500R/LE-2500R/LE-3500/LE-2500/LE-1500) via USB. You need to install the USB driver to control the analyzer via PC. USB driver is stored in the CD-ROM.

 Supported OS are Windows 7/8/8.1/10.

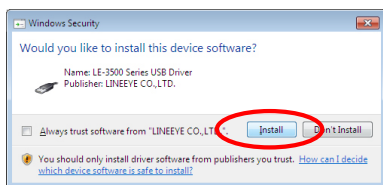
● Windows 7

1. Set the attached CD-ROM into the CD-ROM drive of the PC.
2. Execute "setup.exe" file in "Driver" folder of the attached CD-ROM.
3. "User Account Control" appers in the display of the PC.
Then click "Yes".



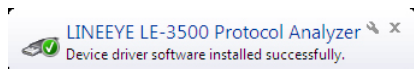
4. "LINEEYE driver package installer" appears. Then click "Yes".
5. "Device Driver Installation Wizard" appears. Then click "Next".
6. Windows security window appears.

Then click "Install".



7. If the window says "Completing the Device Driver Installation Wizard", click "Finish".
8. Connect the analyzer to the PC. The installation is completed if the message like below is appears on the task tray.

Above is the installation for Windows 7. It will be almost same for other Windows OSs.



Analyzer Setting

<USB or Serial connection>

- 1) Connect your analyzer to the target devices you wish to measure.
- 2) Serial connection: Connect your analyzer and a PC by the included cable (LE2-8V).
USB connection: Connect by the USB cable.
- 3) Set the AUX port of your analyzer as follows if you are using the serial connection. (You do not need to set the AUX port if you are using the USB connection.)
(Fixed length of data is 8 bit.)

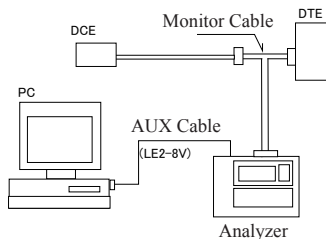
<Example>

Usually, set transmission speed to 115200bps.

Set data length of 8-bit.

Recommended that parity be set to NONE.

Set X-CONT (flow control) to OFF.



AUX COND		*SELECT*	
SPEED	: 115200	0	9600
CHAR BIT	: 8	1	19200
PARITY	: NONE	2	38400
X-CONT	: OFF	3	57600
		4	115200
		5	230400

Attention

- * Make sure to set you analyzer before starting LE-PC300R.
- * Never turn off the power of your analyzer while connecting to the PC.
- * Do not use the USB port while using the serial port of the analyzer
- * Set the electric power saving mode OFF on the PC in order to maintain the connection of the PC link.

<Wi-Fi connection (LE-2500R/LE-3500R) >

- ① Connect the analyzer with the communication line to be measured.
- ② Select the W-LAN of the analyzer from STA (connection via access point) or AP (the analyzer functions as an access point).
- ③ Configure the items for the connection.

< STATION >

REMOTE COND		*SELECT*	
AUX		0	OFF
SPEED	: 115200	1	STA
CHAR BIT	: 8	2	AP
PARITY	: NONE		
X-CONT	: OFF		
W-LAN	: STA		
	PUSH PAGE DOWN		PUSH ENTER TO APPLY

REMOTE COND		[STATION]	
SSID	:		
PASSWORD	:		
DHCP	: OFF		
IP-ADDR	: 0. 0. 0. 0		
NETMASK	: 0. 0. 0. 0		
GATEWAY	: 0. 0. 0. 0		
	PUSH PAGE UP/DOWN		PUSH ENTER TO APPLY

Item	Contents
SSID	Set the identifier of the access point.
PASSWORD	Set the security key (encryption key).
DHCP	ON/OFF of DHCP function. DHCP function turns to be valid by setting ON.
IP-ADDR	IP address of the analyzer

◀ REMOTE COND ▶ PORT : 10001 ←	*INPUT* SET SERVER PORT (1~65535) (DECIMAL) PUSH ENTER TO APPLY
PUSH PAGE UP	

Item	Contents
NETMASK	Subnet mask of the analyzer
GATEWAY	Default gateway
PORT	Port number of the analyzer

☞ When you connect via internet, set the GATEWAY.

☞ Set "IP-ADDR", "NETMASK", "GATEWAY" when the DHCP function is invalid.

< AP >

◀ REMOTE COND ▶ AUX SPEED : 115200 CHAR BIT : 8 PARITY : NONE X-CONT : OFF W-LAN : AP ←	*SELECT* 0:OFF 1:STA 2:AP PUSH ENTER TO APPLY
PUSH PAGE DOWN	

Item	Contents
SECURITY	Select the authentication protocol from followings; OPEN, WPA, WPA2, WPA/WPA2
SSID	Identifier of the analyzer
PASSWORD	Security key (encryption key).
CHANNEL	The channel used for Wi-Fi
PORT	Connect port number of the analyzer

◀ REMOTE COND ▶ [AP] SECURITY: WPA2 SSID : LTRX_IBSS PASSWORD : ●●●●●●●● CHANNEL : 11	PUSH ENTER TO APPLY
PUSH PAGE UP DOWN	

◀ REMOTE COND ▶ PORT : 10001 ←	*INPUT* SET SERVER PORT (1~65535) (DECIMAL) PUSH ENTER TO APPLY
PUSH PAGE UP	

☞ Set the CHANNEL taking care not to interfere other wireless devices

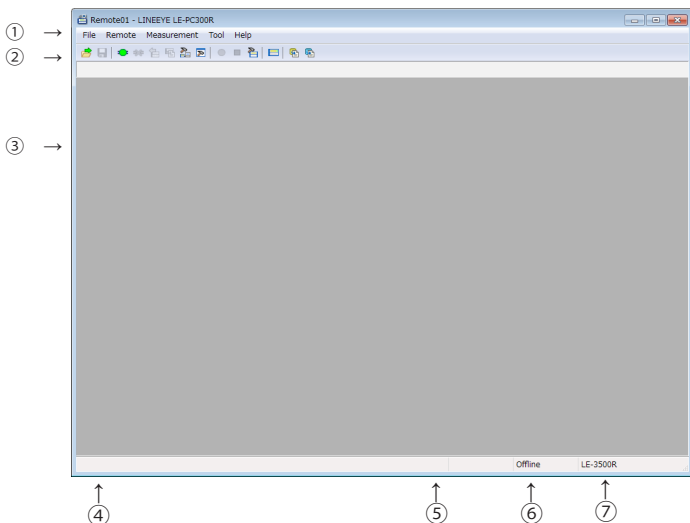
Data Window of PC link software LE-PC300R

■ Starting the PC link software LE-PC300R.

Start "LE-PC300R" from the "Start" of Windows.

Usually, the following display will appear

Data Window



- ① Menu
Can perform various operations.
- ② Tool Bar
Can perform various operations.
- ③ Data display part
Displays the measured data.
- ④ Data position display part
Displays the data position in the Data display part and the current file name. The number of data loss is displayed while remote monitoring.
- ⑤ Various state display part
Displays such as the measurement state.
- ⑥ Connection state display part
Displays the remote connection state between LE-PC300G and your analyzer.
- ⑦ Model name display part
Displays the model name of your analyzer being set at the time of offline, and one of your analyzer being connected at the time of online.

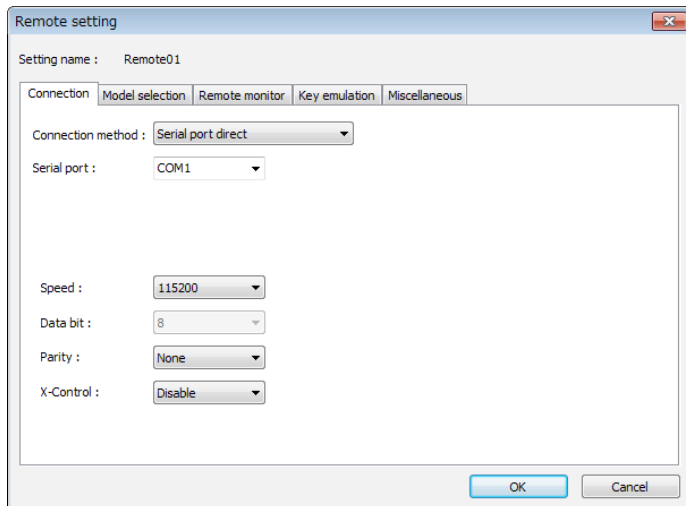
Remote Setting

Click  on the tool bar of the data window (or “Remote Setting” of “Remote” menu) to set the remote setting.

The remote setting consists of “Connection”, “Model selection”, “Key emulation” and “Miscellaneous”.

■ Connection

Sets the remote connection



Connection Method

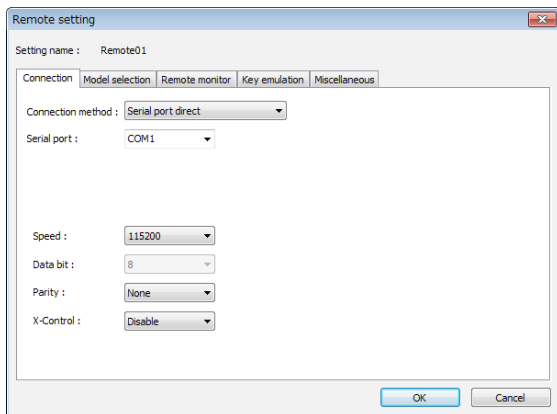
- “Serial port direct” : Connect via serial port of the PC or use the USB-Serial converter (LE-US232B).
- “USB” : Connect via USB port.
- “LAN/Wi-Fi (TCP/IP)” : Connect via Wi-Fi (only LE-2500R/LE-3500R)
- “Via SI-60” : Connect via SI-60 *1
- “Via FA-11” : Connect via FA-11 *2
- “Via FA-21” : Connect via FA-21 *2

Serial port direct
USB
LAN/Wi-Fi (TCP/IP)
Via SI-60
Via FA-11
Via FA-21

*1 You can use SI-60 or SI-60F. To use SI-60, AUX Cable for DSUB 25pin “LE2-8C” is required. For more detail of the SI-60/I-60F setting, read the instructions manual included in the converter.

*2 FA-11 and FA-21 are the products of Century Systems Co., Ltd.
(LINEEYE does not support except SI-60 and SI-60F.)

<Serial port direct>



“Serial Port”

Selects the serial port of the PC to be connected. Enter the port name directly or you can select from the drop down list in the range of COM1 - COM9.

“Communication speed”

Set the communication speed in conformity with that of the AUX port of the analyzer.

“Data bit number”

Data bit number is fixed to 8 and cannot be changed. Set 8 to the data bit number of AUX port setting of the analyzer.

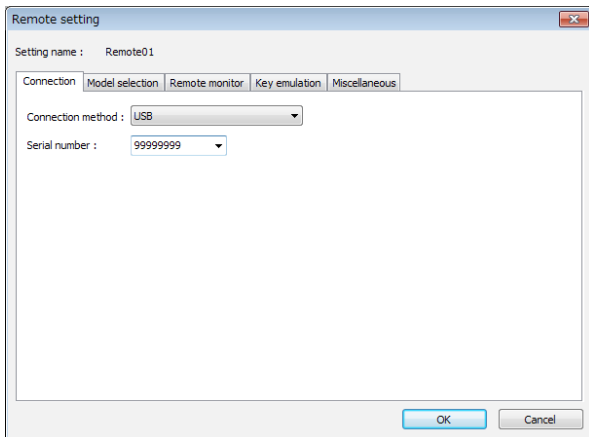
“Parity”

Set the parity of the communication data. Normally set None.

“X-Control”

On/Off of the flow control of X-control for the communication with the analyzer. Normally set None.

<USB>

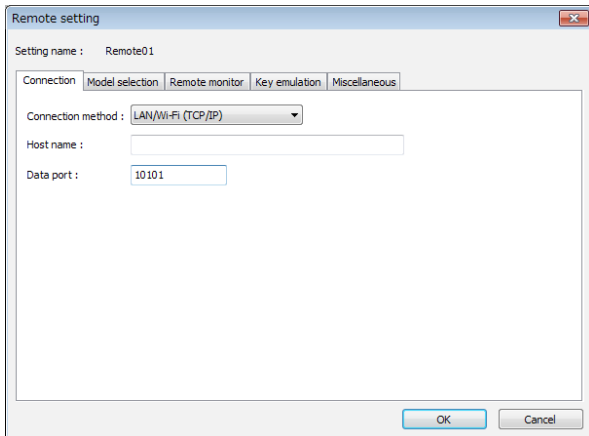


“Serial number” (USB)

Set the serial number of the analyzer to be controlled.

You can select it from the drop down list when the analyzer is connected.

<Wi-Fi>



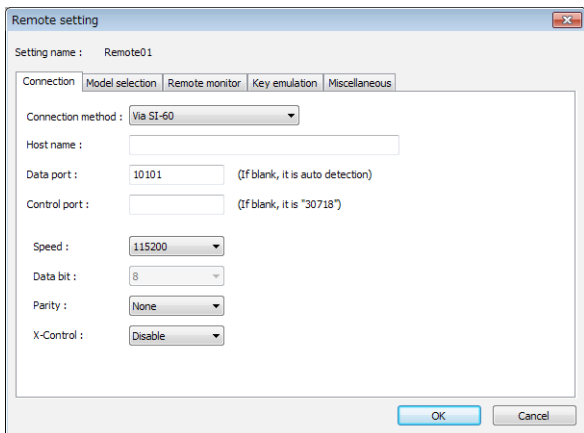
“Host name”

Set the IP address of the analyzer.

“Data Port”

Set the port number for the send/receive of the measured data. Set the same port number set to the analyzer.

<Via SI-60>



“Host name”

Set the IP address of the SI-60.

“Data Port”

Set the port number for the send/receive of serial data. When it is blank, the value is automatically acquired, thus normally leave it blank. When the port number is changed by a router or firewall, you need to configure this item.

“Control port”

Set the control port number of the SI-60. Normally leave it blank. When the port number is changed by a router or firewall, you need to configure this item.

“Communication speed”

Set the speed in conformity with that of AUX setting of the analyzer.

“Data bit number”

Data bit number is fixed to 8 and cannot be changed. Set 8 to the data bit number of AUX port setting of the analyzer.

“Parity”

Set the parity of the communication data. Normally set None.

“X-Control”

On/Off of the flow control of X-control for the communication with the analyzer. Normally set None.

<Via FA-11>

Set as same as the case of SI-60.

Besides that, the command port (of FA11) should be set.

<Via FA-21>

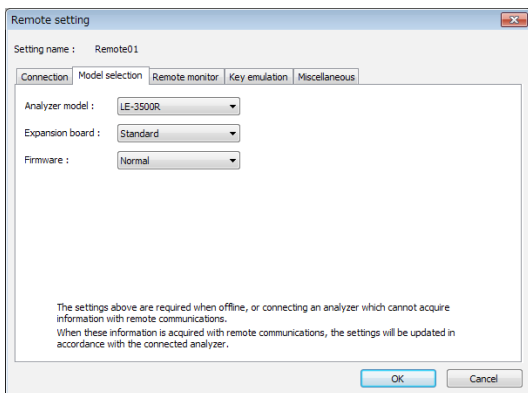
Set as same as the case of FA-11.

Besides that, the serial port (which port of the two ports of FA21 is used) should be set.

■ Model selection

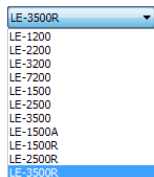
Sets your analyzer settings. Mainly, it is used at the time of offline. However in the case of that there is information which is not received by remote communication at the time of online, it is used as it is set. In addition, if the information is received by remote communication, these settings are automatically changed.

This is an example of LE-3500R setting. Other models are almost same as this.



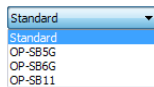
“Analyzer model”

Selects the model name of the target analyzer.



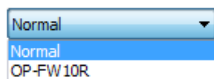
“Expansion board”

Selects the expansion board which is equipped with a target analyzer.



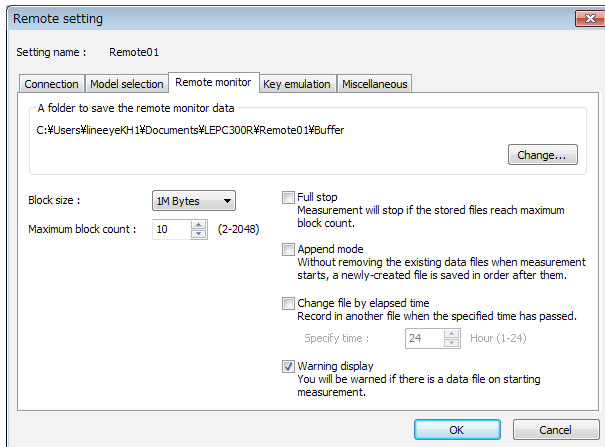
“Firmware”

Sets when you use optional firmware on the target analyzer.



■Remote monitor

Sets the remote monitor



A folder to save the remote monitor data

This folder is to save data received by your analyzer for the remote monitor function.

To change the setting, click “Change” button. Then the window to select a folder appears. Select the proper folder and click “OK” button. The file name of saving data is started from “00000000.DT” in numerical order.

※ Recommends to specify an exclusive folder.

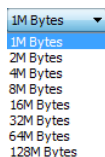
※ Specify a drive which has enough capacity.

(When it does not have enough capacity, the PC may not operate correctly.)

“Block size”

Sets the data capacity per file. You can select from “1M Byte”, “2M Byte”,

“4M Byte”, “8M Byte”, “16M Byte”, “32M Byte”, “64M Byte”, or “128M Byte”.



“Maximum block count”

Sets the maximum block count of a file to save. You can set from 2 to 2048. When the number of the data file is over this setting, the data file with a small number file is deleted.

Maximum block count : 10 (2-2048)

“Full stop”

If the stored files reach to the maximum block count, measurement will automatically stop.

“Append mode”

When measurement starts, a newly-created file is saved in the order after the existing files. If the numbers of the whole data files are over the maximum block count setting, a data file with a small number file (includes data files which were saved on the former measurement) is deleted even in the append mode.

“Change file by elapsed time”

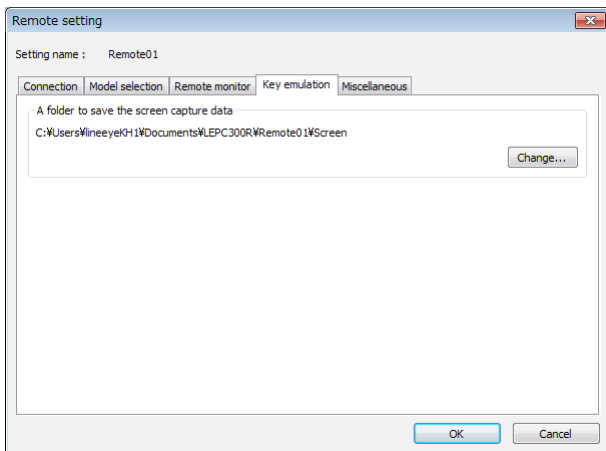
Create a new data file when the specified time has been elapsed, even if the size of the former data file has not reached the specified Block size. However, if the data file under recording has not recorded any data, the new data file will not be created.

“Warning display”

You will be warned if there is a data file in the files to save when starting measurement.

■ “Key emulation”

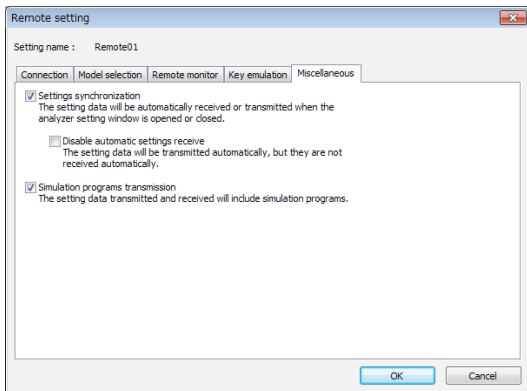
Sets the key emulation.



A folder to save the screen capture data

A folder to save a screen image when you save it on the key emulation screen. Click “Change” button and the folder selecting window appears. Select the folder and click “OK”.

■ "Miscellaneous"



Settings synchronization

*On-Line:

Transmits and receives the setting automatically at the time of the opening and closing the analyzer setting window. If you mark on "no automatic receiving", you only transmit and do not receive.

*Off-Line or While measuring:

Does not transmit the setting automatically.

You need to save the setting as a file, because when you open the analyzer setting window, it automatically receives the setting and overwrite it.


Transmit Program Simulation

The setting data transmitted and received will include simulation programs.

Chapter 6 Remote Monitor


This function allows to start measurement of your analyzer and to record measurement data in the HDD of the PC, displaying the data in real time.

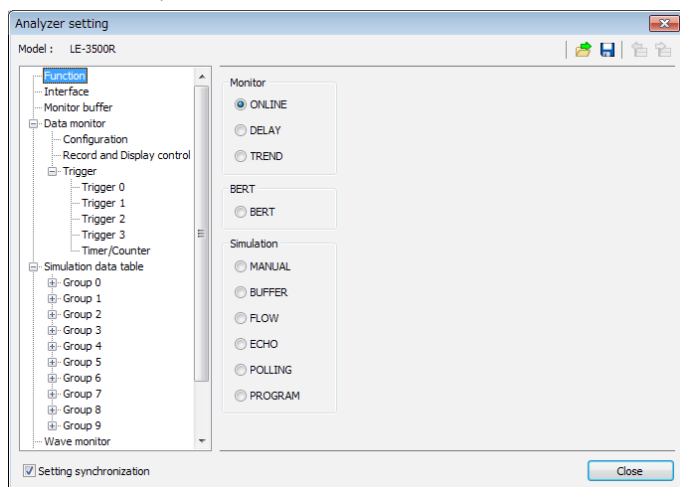
Connection



After finishing the remote setting, click  on the tool bar of the window (or click “Connect” of the remote menu) to connect with you analyzer.

At the time of completing the connection with your analyzer, the connection state display part of the data window displays “Stopping”, and the model display part displays the model name of the analyzer connected.

Analyzer Setting


Click  on the tool bar of the data window to set you analyzer (or click “Analyzer setting” of the measurement menu.)

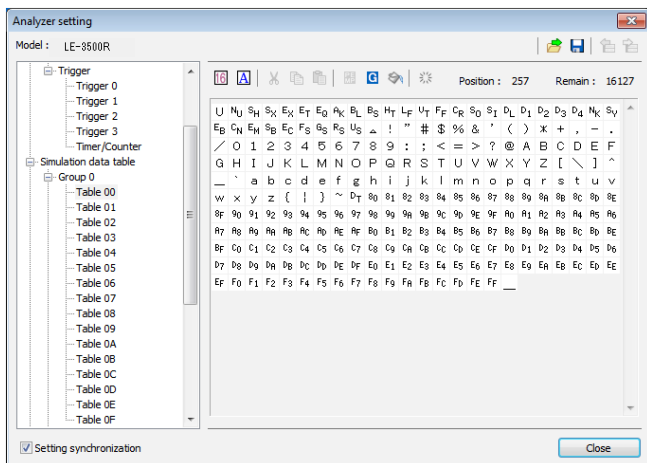











On the analyzer setting window, every time you change the setting on a tree (on the left side of the window), the contents of the setting (on the right) are changed. Set the necessary settings. Click  to send the setting contents to your analyzer. On the other hand, click  to receive the setting contents of you analyzer.

*When you continuously measure for long hours using remote monitoring, do not set "Record control" to "Full stop: On", or "Trigger" to "Action: Stop".

Simulation Data Setting

Click  on the toolbar of the data window to select the simulation data table you would like to set (or click “Analyzer setting” of the measurement menu.)




-  : Change the data to hexadecimal or character code.
-  : Change the input method to hexadecimal or character code.
-  : The character which is focused is set to the parity error (or the multi processor bit)
-  : Input BCC (or FCS)
-  : Input the data from “Begin data” to “End data” for the number of times set in “Data size”.
“Begin data” < “End data” : Inputs the number of times set in “Data size” while performing “+1” from “Begin data”
“Begin data” > “End data” : Inputs the number of times set in “Data size” while performing “-1” from “Begin data”
-  : Delete all data in the table.
-  : Cut selected data.
-  : Copy selected data into clipboard.
-  : Paste data from clipboard.

Max speed when remote monitoring





Max speed which analyzer can measure is depending on the connection to the PC. Refere to the following standard speed.

	No frame interval	Frame interval of 1m sec
USB	670kbps	1.9Mbps
Wi-Fi	200kbps	460.8kbps
Serial	20kbps	20kbps



*1 This result is when you monitor the full-duplex line in which 1KB frames is transmitted. For Wi-Fi connection, depending on the radio condition the speed may be lower than above value.

- It will cause the data loss if the actual communication speed is more than the max. speed.
And PC will stop the action until the analyzer process all measured data to the PC.
- When the measured data is lacked,  will displayed on the window.
- Key emulation mode will decrease the max. speed.

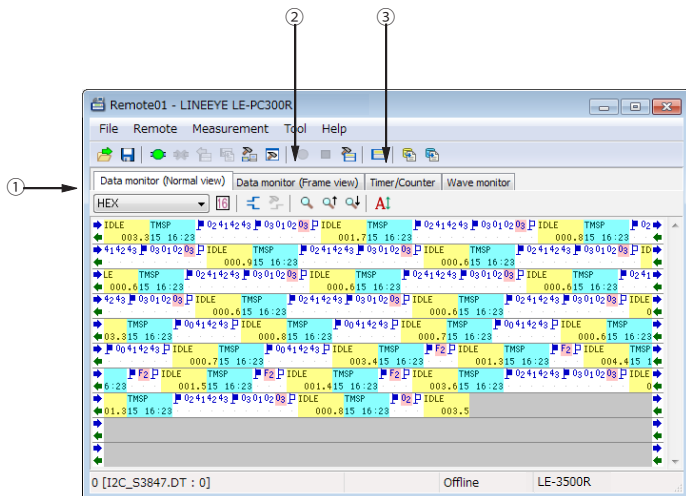
Start Measurement

Click  on the toolbar of the data window (or click “Run measurement” of the measurement menu) to measure. After measurement starts, “Measuring” is displayed on the state display part, and data received from your analyzer is displayed. You can change the character size (click ), the character code, the display in hexadecimal (click ), and the pause while measuring (click ).





Stop Measurement

To stop measurement, click  on the toolbar of the data window (or click “Stop measurement” of the measurement menu.) After stopping measurement, you can scroll data. Data is automatically saved in the folder you specified on the remote setting. To save with another name, click  (or click “Save data file” of the file menu.).


At the time of stopping measurement, the last file is displayed. To display all files, click  (or click “Open data file” of the file menu) and select the file to display.



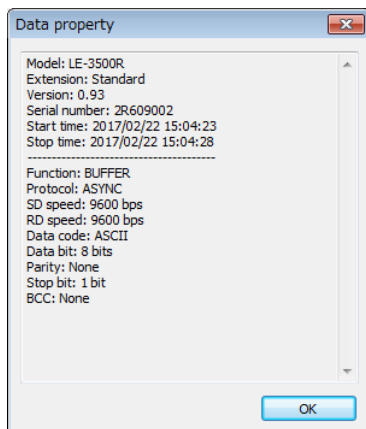
There are following methods to switch the screen display.

- Change display code Select a character code from the drop down list (marked above 1) which displays the character code.
- Hexadecimal display Click  .
(Displays in hexadecimal including the special characters.)
- Control line information display Click  .
Click  to open the control line information setting window.
- Translated view To switch the screen into the translated view screen, click the data monitor (translated view) tab (marked above 2.). Click  to switch the screen into the packet translated view if the packet translation is possible. Click the data monitor (normal view) tab to switch the screen into the original display screen.
- Timer / Counter To switch the screen into the timer / counter display screen, click the timer / counter display tab (marked above 3).
- Wave monitor display To switch the screen into the wave monitor display screen, click the wave monitor display tab.

Read the Measurement Data

Click  on the toolbar of the data window (or click “File” -> “Open data file”) to select a file of the measurement data. When two or more files are opened, they are displayed as continuous data.

Click “File” -> “Show data property” to check the configuration, date of measurement and so on.



Search Data

Click  to set the search conditions on the data search window.

-Search conditions

“Trigger”	Data which meets the trigger conditions
“Error”	Parity error/Framing error/BCC error/FCS error/Break/Abort/Short frame error (Data which meets what was marked).
“Character (Hex)”	The data length of a maximum of eight characters. (Can specify don't care and bit mask.)
“Character (String)”	The string length of a maximum of sixteen characters. (Can specify the characters in alphabet, number or symbol (in ASCII)) Data search is made according to the display data code.
“Idle time”	Idle time more than the appointed time.
“Time stamp”	The designated time stamp. (Can specify don't care.)

-Search operation

“Display”	Display the matched data on the top.
“Calculation”	Display the number of data matched.


* To learn more details of the search condition, read the instruction manual of your analyzer.

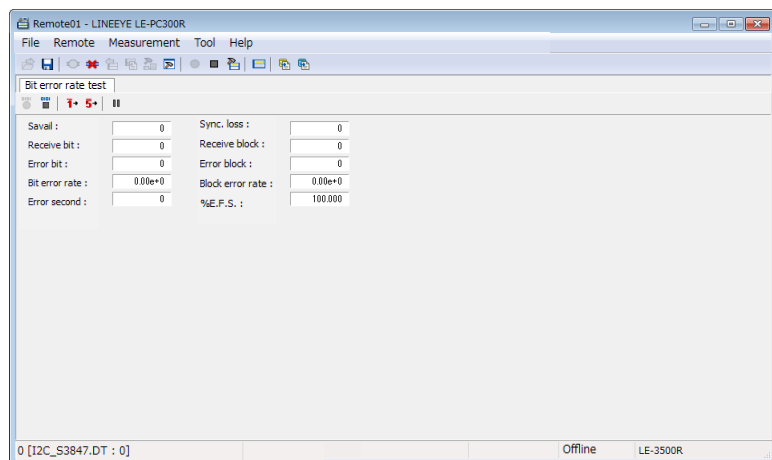
Click  (search the forward data) or  (search the backward data) to search and calculate data.

Chapter 7 Bit Error Rate Test (BERT)

Bit error rate test (BERT) can monitor the quality of communication lines in the long distance.

Start Measurement

Click  on the toolbar of the data window (or click “Run measurement” of the measurement menu). After measurement starts, the following screen appears.



: Start BERT.



: Stop BERT. (The test pattern is still output.)



: Output error of 1 bit.



: Output continuous error of 5 bits.



: Pause on updating display.



: In the case of the repeat mode BERT, multiple results can be received and converted into CSV when measurement stops.
Converted results are saved as BERTDATA.csv.



: Convert the BERT results of the repeat mode saved on the analyzer (saved on the CF card.) into CSV.




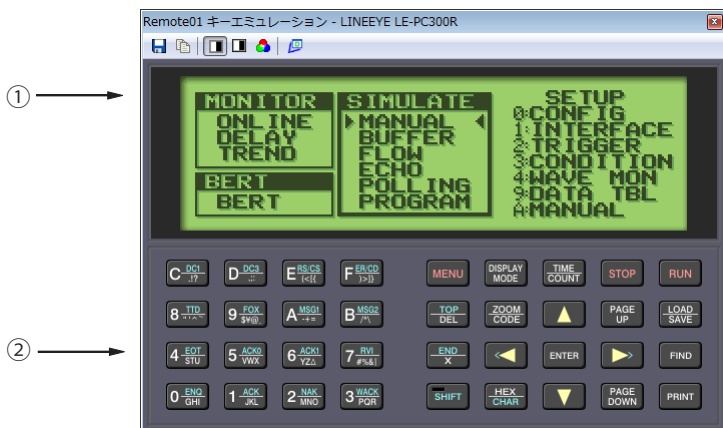
: Save BERT results. In the repeat mode, press “Text conversion” to save the history as the CSV file, because only the latest result is saved.

Chapter 8 Key Emulation

This function allows to control the analyzer from a far place. (remote control)

Run Key Emulation

Click  on the toolbar of the data window (or click “Key emulation” of the tool menu.).



1. Displays the screen of your analyzer being connected.
2. Emulate the key of your analyzer.

Capture the Screen Image

You can save the screen image of the connected analyzer in a bitmap (BMP) file format.



: Capture the present screen as a bitmap file.



: Copy the present screen to the clipboard.



: Create a bitmap file in a monochrome mode.



: Create a bitmap file in a monochrome mode (with an outer frame.)



: Create a bitmap file in a color mode.



: Go back to the previous data window.

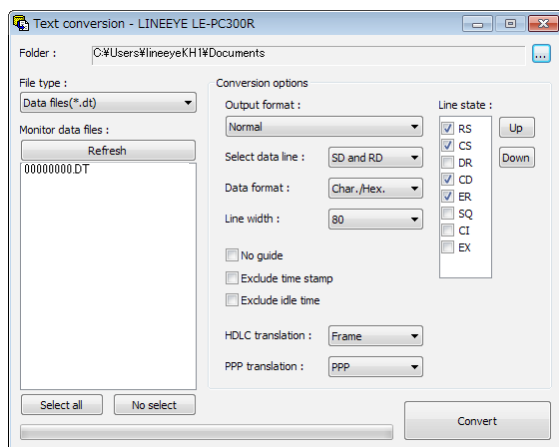
Chapter 9 Text Conversion

This function allows to convert the data which is measured on the remote monitor, and which is saved on such as a memory card and HDD into a text file.

Text Conversion Function Setting

Click  on the toolbar of the data window (or click “Text conversion” of the menu.).

The following text conversion window opens.



-Folder

Specify a folder which has the data you wish to convert into text.

-The kind of file

Selects from “Data files” and “Analyzer’s auto save files.”

-Refresh

Refresh the file information in the specified folder.

-Monitor data file

Selects a file you wish to convert from the list display. It is selected by clicking the file. To cancel the selection, click the file again. (You can select two or more files and cancel them all.)

-Output format

Selects a format you wish to convert from the following.

“Normal print” (Print format of your analyzer)

“Normal print with line state” (Print format of your analyzer which includes control line information)

“Translated print (designated at the time of measurement)” (Translated print format of your analyzer)

“CSV format processing unit: Data (normal)” (Every data divided.)

“CSV format processing unit: Frame” (Every frame divided.)

-The number of characters per line

Selects the number of characters displayed per line from “40”, “80”, “136”, and “MAX”.

By selecting “MAX”, when you execute “translation printing” it translates so that all the data field can be displayed.

-Data format

Selects the data format to convert from the following.

“Char. / Hex.” (Displays the character code and the hexadecimal number.)

“Char. Only” (Only characters are displayed.)

“Hexadecimal” (Only the hexadecimal number is displayed.)

-No guide

If “No guide” is checked, converts such as the communication condition without guide.
(data only)

-Exclude time stamp

If “Exclude time stamp” is checked, delete the time stamp to convert.

-Exclude idle time

If “Exclude idle time” is checked, delete the idle time to convert.

-Select data line

Selects the data to convert from “SD and RD,” “SD only” and “RD only.”

-HDLC translation

At the time of HDLC, selects the translation format to convert from “Frame” and “Packet.”

-PPP translation

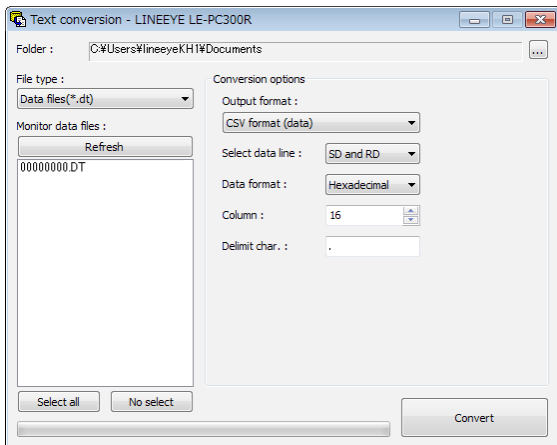
At the time of PPP, selects the translation format to convert from “PPP” and “DUMP.”

-Line state

At the time of “Normal print and Line state,” mark the control line to display with.

You can change the order to display, by clicking “up” and “down” button.

If the CSV conversion is selected, the following window appears.



-Select data line

Selects from “SD and RD,” “SD only” and “RD only.”

-Data format

Selects from “Hexadecimal,” “Decimal” and “Character.”

-Column

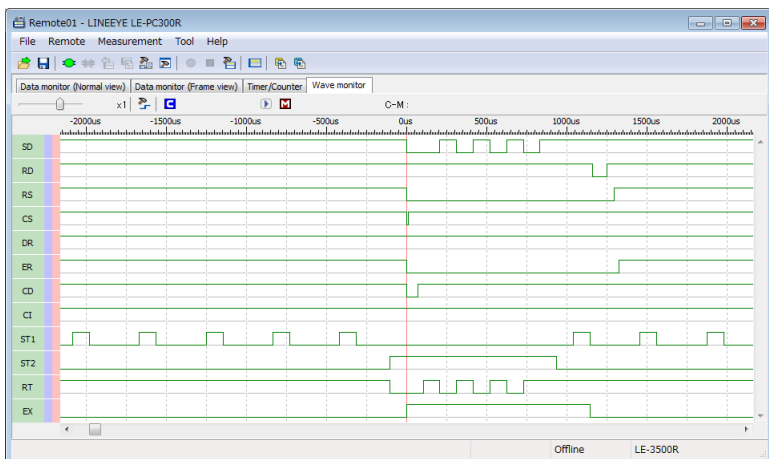
Sets the range between 1 and 65535.






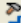
-Delimit char.

Sets the delimit character such as “,”

Start Text Conversion

Click “Convert.” A converted file is saved in the folder which contains its source file.




- Scaling factor Move the slider  and select the scaling factor.
- Cursor display Click . Place the cursor near the center of the screen.
- Marker display Click . Place the marker near the center of the screen.
- Time measurement Drag  and  on the screen of the wave monitor to the position you wish to measure. “C-M:***ms” shows the time between the cursor and the marker (eg.The image above indicates C-M: 74ms.).
- Signal display order setting Click  to set the order to display on the signal standard setting.

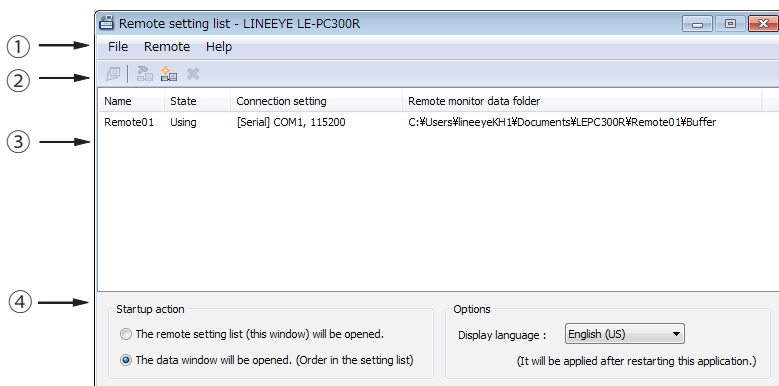
Chapter 11 Connecting Multiple Analyzers

To connect multiple analyzers at the same time, add the necessary setting for the number of analyzers to connect.

Adds the remote setting on the remote setting list window.


To open the remote setting list window, click  from the toolbar of the window (or click “remote setting list” of the tool menu).

Remote Setting List Window



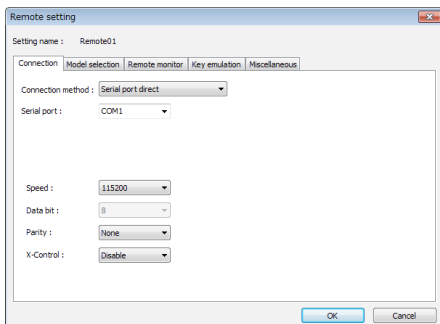
1. Menu
Performs each operation.
2. Toolbar
Performs each operation.
3. Remote Setting List
Displays the remote setting.
4. Option Setting
You can select the language (valid after reboot).

Add the Remote Setting


To add a new remote setting to the list, click  on the toolbar of the remote setting window (or, click “new setting” of the remote menu.). Sets the necessary items. (For more information about each item of the remote setting, read “Chapter 5 Environment setting.”)

* For multiple analyzers, make sure not to specify the same folder as location of saving the remote monitor data.

When opening this setting window from the remote setting list window, you can rename the setting name. Adds the remote setting for the number of analyzers you wish to connect. (It does not allow you to rename the setting name when the window opened from the data window.)




Open the Data Window

To open the selected data window for remote setting, select the specific remote setting from the list of the remote setting list window (multiple selections possible), and click  on the toolbar (or, click the “open data window” of the file menu.).

Delete the Remote Setting

You can delete unnecessary remote setting.

At first, select the remote setting you wish to delete from the list of the remote setting list window (multiple selections possible) and click  on the toolbar (or, click “delete setting” of the remote menu). Then, the deletion confirmation appears and the selected setting will be deleted by clicking the “OK” button.

However, if the remote setting which is using in the data window, you cannot delete it. If you end the application with all the remote settings deleted, a new setting (default setting) will be automatically added when you start the application next.

Operate Setting When Starting

You can select operation when LE-PC300R starts from the following:

“The remote setting list (this window) will be opened”

The remote setting list window will be opened. If the window has already opened, it will be displayed in front.

“The data window will be opened. (Order in the setting list)”

The data window will be opened in the order according to the remote setting list. If all data windows for the remote setting have already opened, the operation is the same with “The remote setting list (this window) will be opened.”

Startup Options

When starting the LE-PC300R, following options can be used.

-r "<Setting name>"

Start measuring automatically by the specified Connection setting after starting LE-PC300R.

To start measuring by the multiple settings, ex. specify as follows.

-r "Remote01" -r "Remote02"

When starting the measurement by using AUTO measurement function, the warning message of losing the existing data file will not be displayed. Also, when starting the measurement by using APPEND mode and the selected configuration file automatically, the existing data file will be erased without the warning message when starting LE-PC300R.

-q

It saves measured data to the data file immediately, and try to keep the format of data file as normal. (LINE-EYE does not warrant the condition is normal.)

Also, it will allow to read the measured file which is in the process of saving data, and able to copy the data file. However, the data file which is in the process of saving data can not be opened by the other window of LE-PC300R.

It is possible that this function will deteriorate the ability of PC or storage of saving data file. Therefore, LINEEYE does not recommend using this function.

Chapter 12 Specification

Applicable analyzer	LE-3500R/LE-2500R/LE-1500/LE-2500/LE-3500 *1	
Connection	Serial, USB, LAN (the LAN-serial converter SI-60, SI-60F), Wi-Fi	
No. of analyzers to be connected	Multiple analyzers can be connected and controlled simultaneously. (No. of connectable analyzers depends on the performance of the PC.)	
Measurement conditions	Measurement conditions (communication parameters, triggers and simulation data) can be set.	
Key emulation	Displays the analyzer's display and keys on the PC screen and can perform the analyzer remote control.	
Remote monitor	Starts/stops the measurement, displays the measurement data on the PC screen, and records the data continuously	
	Recording mode	Fixed buffer mode: Measures data up to the specified size and stop automatically. Ring buffer mode: Records the latest data of the specified size endlessly.
	Recording capacity	Max. 256GB: Can be specified up to 2,000 files in the unit of 1/2/4/8/16/32/64/128 MB.
Text-CSV conversion	Specified number of the recorded files can be converted to text or CSV format at once.	
Screen image capture	Analyzer's display shown by the key emulation can be saved as the bitmap files.	
Display modes	Standard display	Displays the communication data, idle time, time stamp and data line status. Displays in ASCII, EBCDIC, JIS7, Baudot, Transcode, IPARS, EBCD, EBCDIK, HEX(includes errors).
	Translation display	Translates and displays protocols such as SDLC, X.25, LAPD, PPP and IrLAP. Displays frames of I ² C and SPI.
	Waveform monitor display	Enlarges and reduces the waveform (Can measure time, and rearrange signals.)
Search	Finds and displays the data that matches the search conditions.	
	Search conditions	Specified character (Hex: max.8 characters / String: max.16 characters) (don't care and bit mask can be specified) Error (parity, framing, BCC, break/abort, short frame: individual error type can be specified.) Idle time beyond a specified duration. Specific time stamp (don't care can be specified.)
System requirements	PC	RAM: 250MB or more HDD: 5MB + free space for saving the measurement data.
	OS	Windows 7/8.1/10

*1 You cannot use this PC link software together with OP-SB7GX at the same time.

There is a registration page on our web site.

(<http://www.lineeye.com>)

Please register your product for further support.

We will provide you the firmware update
information and sales information etc.

LINE EYE CO., LTD.

4F., Marufuku Bldg., 39-1 Karahashi Nishihiragaki-cho, Minami-ku,
Kyoto, 601-8468 Japan

Phone: 81-75-693-0161 Fax: 81-75-693-0163

URL: <http://www.lineeye.com>