

“LE file downloader” captures the communication log files saved in the storage device using the auto save function and send them to the PC via LAN or Wi-Fi. This tool is useful to capture the communication log files which has the time stamp around the time when a communication failure occurred, and to analyze the target data using the PC link software.

☞ ”LE file downloader” transfers only the measurement data files with the name of “#nnnnnnn.DT” (n is a sequential number starting from “0”) saved by the auto save function.

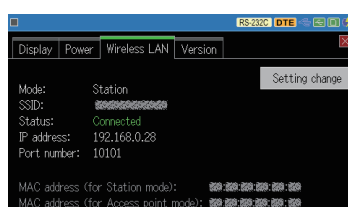
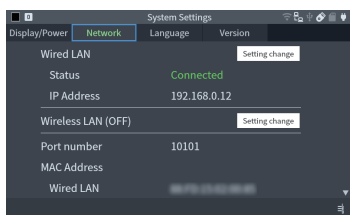
[Applicable Models]

LE-8600X(R), LE-8500X(R), LE-8500X(R)-RT, LE-8500X(R)-SE, LE-3500XR/LE-2500XR,
LE-3500R/LE-2500R/LE-1500R, LE-200PR/LE-150PR, LE-200PF/LE-150PF, LE-270GR/LE-270AR

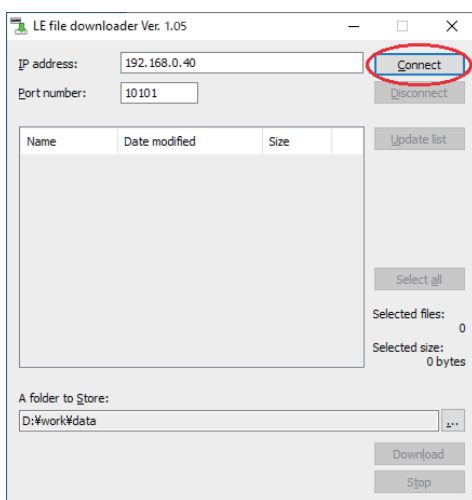
[How to use]

- 1) Doesnload the lefiledownload.exe from LINEEYE website to your PC.
There is no need of install.
- 2) Configure the analyzer and PC to connect them via LAN or Wi-Fi and then start the measurement with auto-save function.

The LAN/Wi-Fi setting of the analyzer is to be done at the network setting tab of system settings for LE-8600X(R), LE-8500X(R), and LE-8500X(R)-RT, at the wireless LAN setting tab of the system settings for LE-3500XR and LE-2500XR, “LE Wireless LAN configuration” or at the remote communication condition setting by [MENU],[3],[3] for LE-3500R, LE-2500R, and LE-1500R. Please refer to the manual of analyzer for the detail.

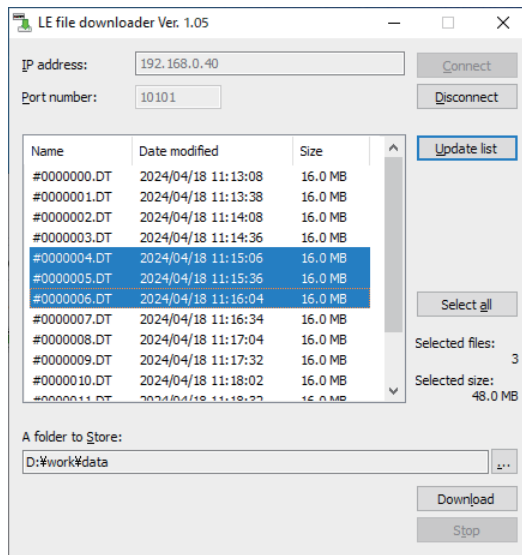


- 3) Double-click lefiledownload.exe to run it.
- 4) Input the IP address and port number of analyzer.
- 5) Click [Connect] to list the log files in the list window.
Click [Update list] to update the list window to the latest condition.

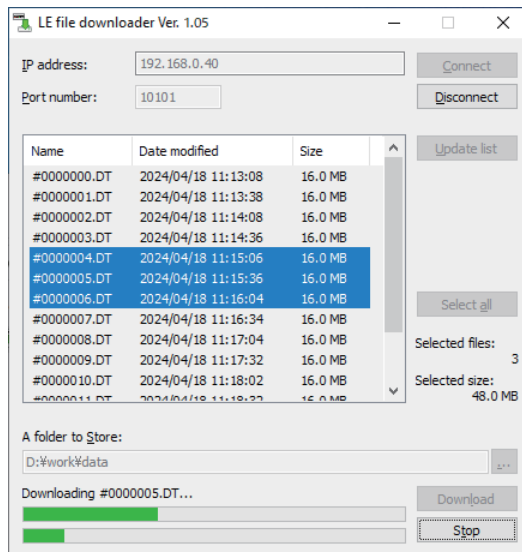


* The IP address on the display is an example. Input the IP address allotted to the analyzer depending on the network environment. The port number on the display is the default value of the analyzer.

- 6) Check the time stamp etc. to find the file you want and click to select the file to be downloaded.



- 7) Confirm the directory where the file to be downloaded and change it by clicking [...] if you need.
- 8) Click [Download] to start the transfer from the analyzer to PC.



- When the transfer is via Wi-Fi, it will take about 2 minutes.
 If you download it while measurement, depending on the communication speed of the measurement and radio condition it may take more time. Please note it when you download many files. When the transfer is via wired-LAN, transferring 16MB file will be finished in a few seconds.
 It saves one by one to the specified directory.

- 9) Read the log file by a PC link software for your analysis.