

By using the "LE File Downloader", you can import communication log files saved on a storage device by the analyzer's auto-save function or trigger-save function to a computer via LAN or Wi-Fi.

You can execute the auto-save function by the analyzer on the site, import communication log files with timestamps around the time of the communication failure to a computer, and analyze them with PC link software.

- 📄 The files to be transferred are measurement data files saved by the auto-save function with the name #nnnnnnn.DT (n is a sequential number starting with 0), and measurement files saved using the trigger-save function with the name TGSAVEnn.DT (n is 0 to 99) or TGSAVnnn.DT (n is 0 to 999).

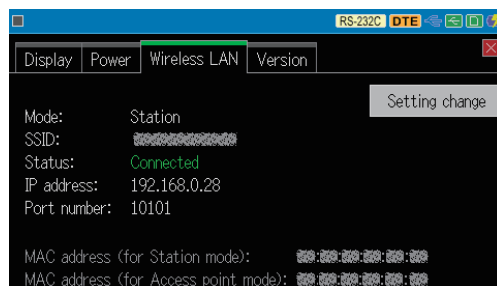
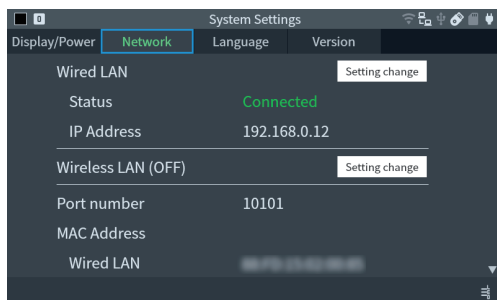
[Applicable Models]

LE-8600X(R), LE-8500X(R), LE-8500X(R)-RT, LE-8500X(R)-SE, LE-3500XR/LE-2500XR,
 LE-3500R/LE-2500R/LE-1500R, LE-200PR/LE-150PR, LE-200PF/LE-150PF, LE-270GR/LE-270AR

[How to use]

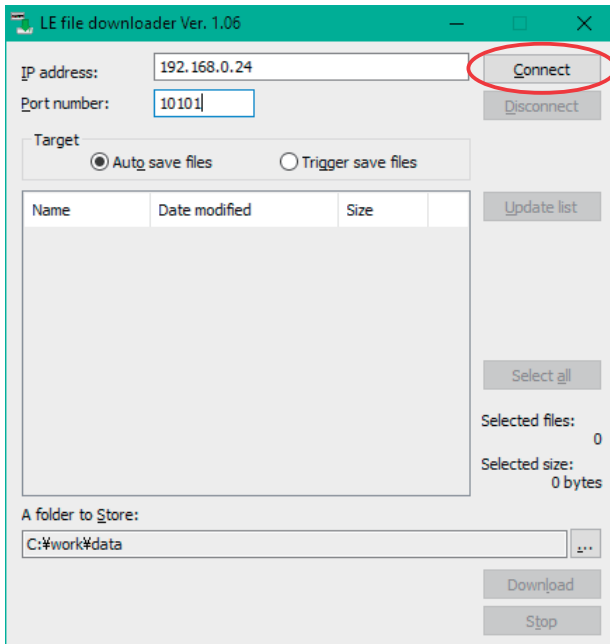
- Download the lefiledownload.exe from LINEEYE website to your PC.
There is no need of install.
- Configure the analyzer and PC to connect them via LAN or Wi-Fi and then start the measurement with auto-save function.

The LAN/Wi-Fi setting of the analyzer is to be done at the network setting tab of system settings for LE-8600X(R), LE-8500X(R), and LE-8500X(R)-RT, at the wireless LAN setting tab of the system settings for LE-3500XR and LE-2500XR, "LE Wireless LAN configuration" or at the remote communication condition setting by [MENU],[3],[3] for LE-3500R, LE-2500R, and LE-1500R. Please refer to the manual of analyzer for the detail.



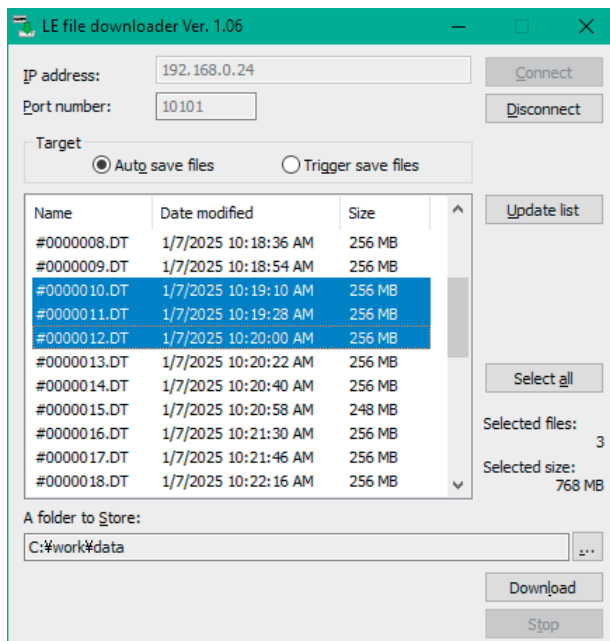
- Double-click lefiledownload.exe to run it.
- Input the IP address and port number of analyzer.

- 5) Click [Connect] to display a list of log files in the list window.
Select the type of file to be transferred that you want to download.
Click [Update list] to redisplay the latest status in the list window.

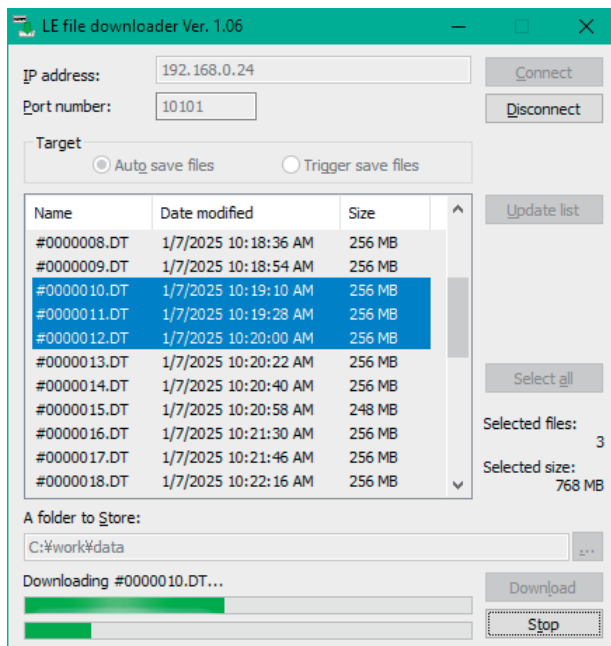


* The IP address on the display is an example. Input the IP address allotted to the analyzer depending on the network environment. The port number on the display is the default value of the analyzer.

- 6) Check the time stamp etc. to find the file you want and click to select the file to be downloaded.



- 7) Confirm the directory where the file to be downloaded and change it by clicking [...] if you need.
- 8) Click [Download] to start the transfer from the analyzer to PC.



- When the transfer is via Wi-Fi, it will take about 2 minutes.
If you download it while measurement, depending on the communication speed of the measurement and radio condition it may take more time. Please note it when you download many files. When the transfer is via wired-LAN, transferring 16MB file will be finished in a few seconds.
It saves one by one to the specified directory.

- 9) Read the log file by a PC link software for your analysis.