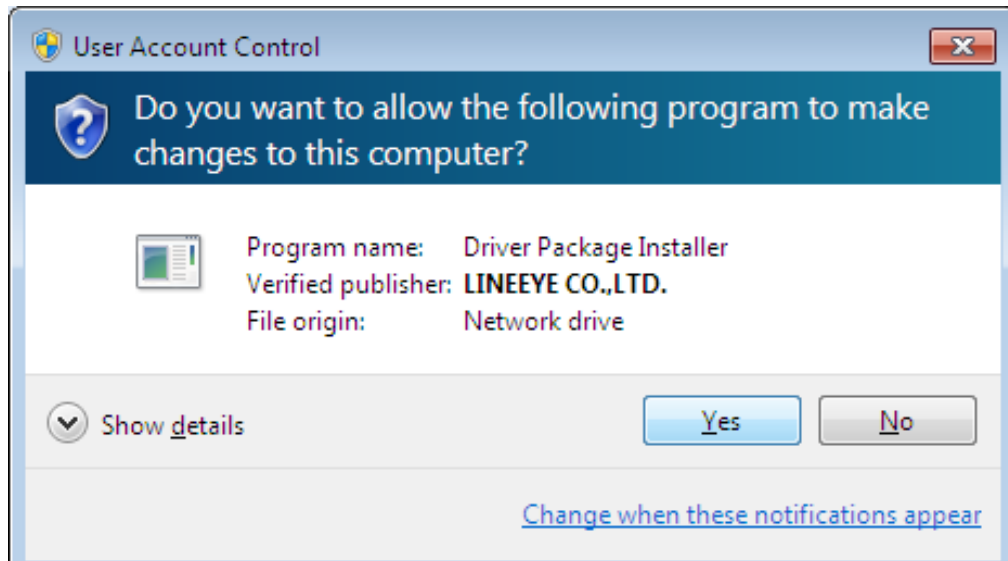
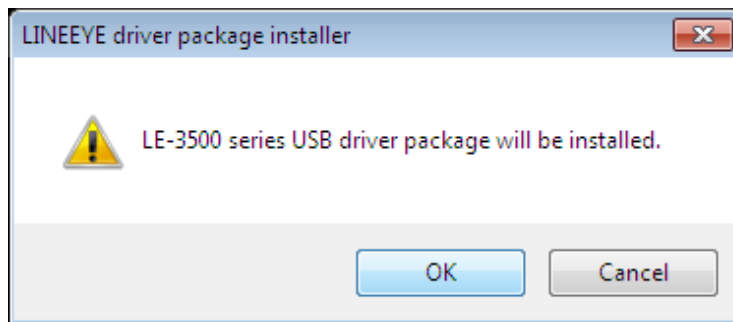


## LE-2500/LE-3500, Installation of Driver for Windows7 (32/64bit version)

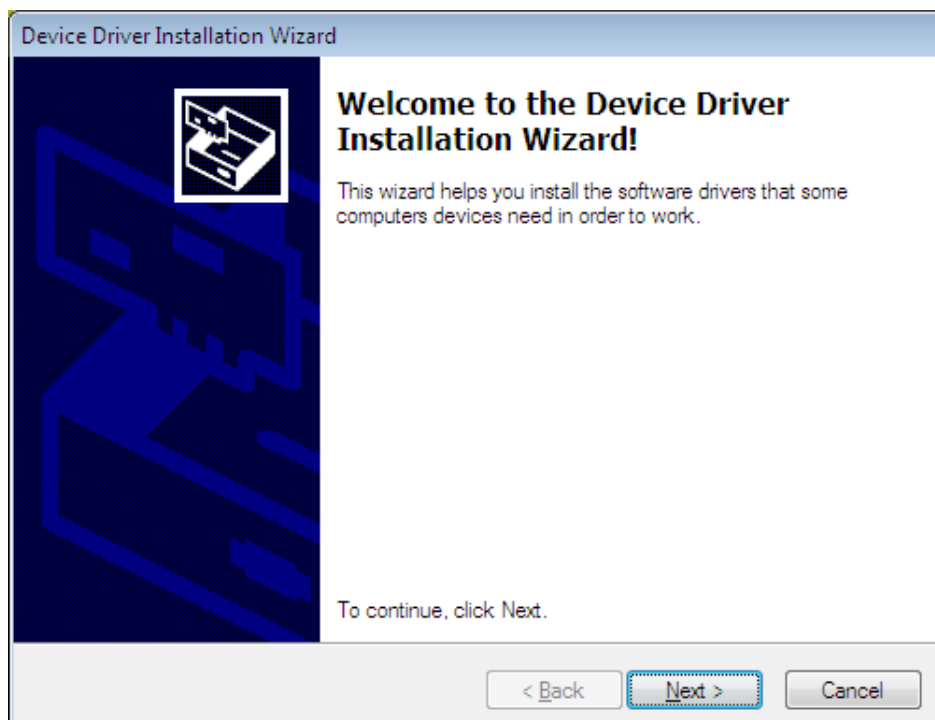
- 1). Defrost the downloaded file to the appropriate folder.
- 2). Click "setup.exe" in the folder of "/lex500dirver" in the CD-ROM.  
Following dialog will be appeared. Click "Yes"



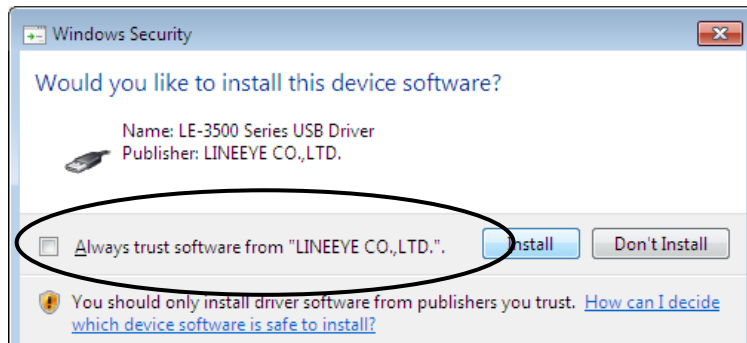
- 3). Click "OK" to start installing the driver package.



- 4). Click "Next" to start the set up wizard.

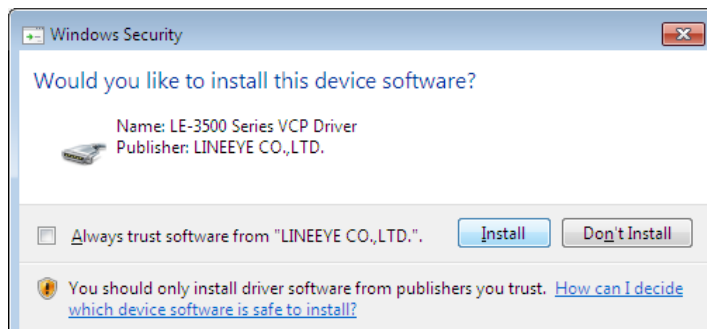


Click “Install” and install the first driver.

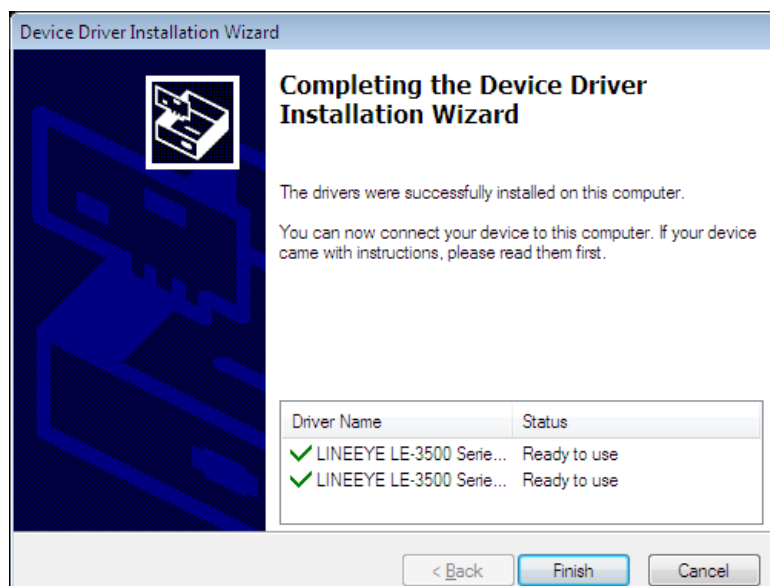


If marking on the box of “Always installing the software of LINEEYE”, this dialog will not be appeared again.

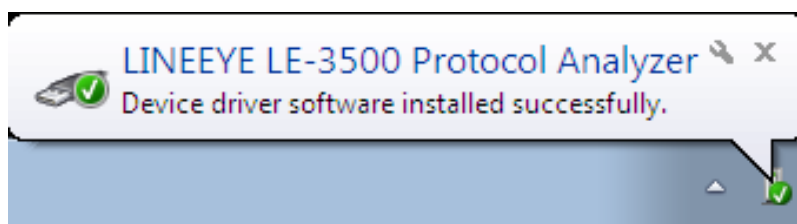
5) Click “Install” to install the second driver.



6) “Click “Complete” and finish installation of driver package.



7) Connect LE-3500. If it is recognized, following message will be appeared in the right bottom on the task bar.



End of the installation